

## FABRICATION OF COMPONENTS

" FABRICATION OF COMPONENTS"

1. THE ORDER SHOULD NOT BE PREFERABLY SPLITTED. THE COMPREHENSIVE QUOTE CONSIDERING FABRICATION/FITMENT OF ALL COMPONENTS, FOR AT CSIO WILL BE CONSIDERED.

THE TWO QUOTES SHOULD BE GIVEN CONSIDERING MATERIAL AND WITHOUT MATERIAL.

2. THE REQUIRED QUANTITY IS 5 NOS EACH AND COMPONENTS SHOULD BE SEALED /PACKED AS PER THE ORIGINAL FACTORY PACKING. IF FOUND DAMAGED, WILL BE RETURNED.

3. THE PRICE SHOULD BE INCLUDING EX-CSIO DELIVERY.

4. THE VALID COC/INSPECTION REPORT SHOULD BE SHARED.

5. PAYMENT AND OTHER THINGS AS PER CSIO NORMS

6. PL MAIL AT [head.pme@csio.res.in](mailto:head.pme@csio.res.in), [harry.garg@csio.res.in](mailto:harry.garg@csio.res.in)

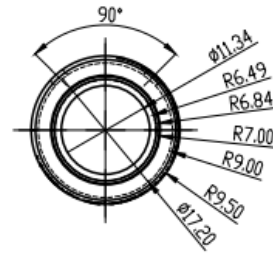
7. QUOTE TIME 7 DAYS FROM DATE OF TENDER.

8. THE DETAILS OF USER WILL NOT BE SHARED.

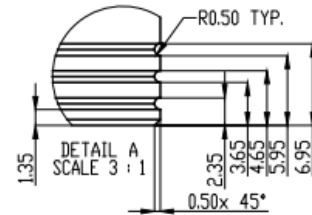
9. FABRICATOR TO SHARE THE DELIVERY TIMELINES AFTER PO AND PAYMENT TERMS.. . FABRICATOR OF COMPONENTS/ PO IS PURELY THE PREROGATIVE OF CSIO.

MECHANICAL PART-1(Material Aluminium: 6061T6)

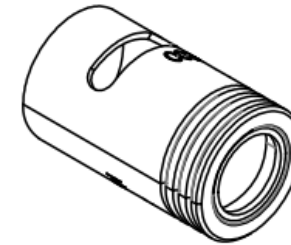
IF IN DOUBT ASK



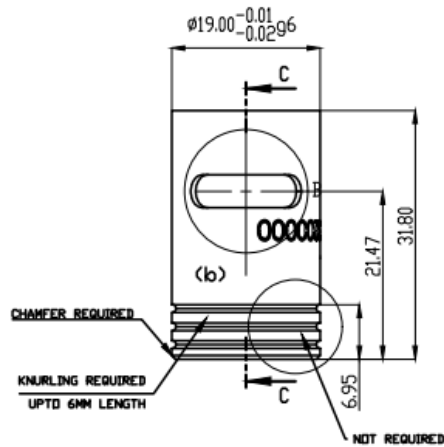
TOP VIEW



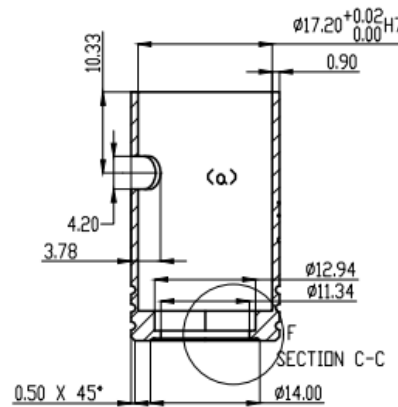
DETAIL A  
SCALE 3 : 1



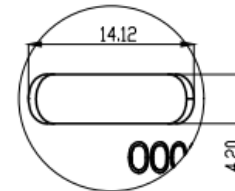
ISOMETRIC VIEW



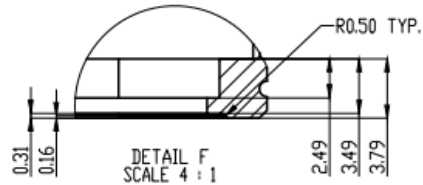
FRONT VIEW



SECTION C-C



DETAIL B  
SCALE 3 : 1



DETAIL F  
SCALE 4 : 1

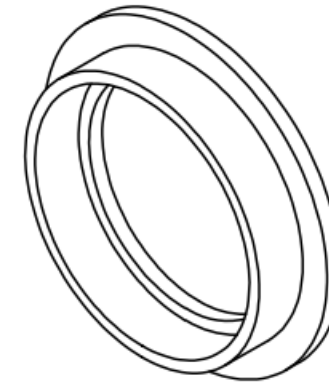
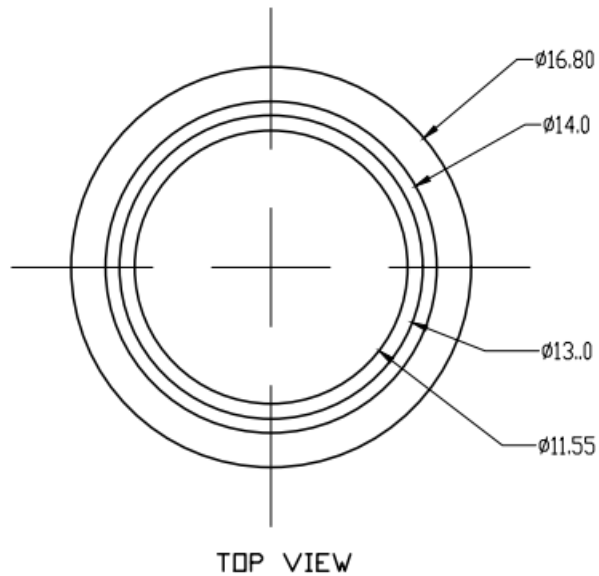
**NOTE:**

- 1) FOLLOW igs/STEP FILE FOR ANY MISSING DIMENSION.
- 2) (a) DENOTES INNER SURFACE & (b) DENOTES OUTER SURFACE
- 3) OUTER SURFACE DULL BLACK ANODISATION
- 4) ± .02 TOLERANCE ACCEPTED.
- 5) PART WILL BE ACCEPTED AFTER INSPECTION.
- 6) PROTECTIVE COATING ONLY APPLICABLE WITH AL6061T6 MATERIAL.

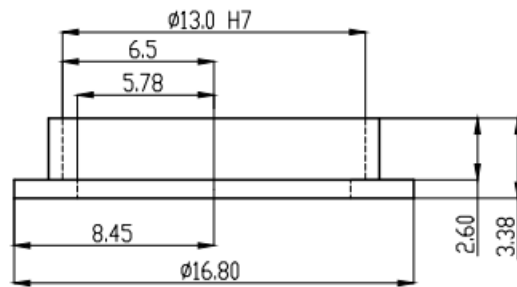
\*(CRITICAL FOR INSTALLATION PURPOSE)

MECHANICAL PART-2(Material Aluminium: 6061T6)

IF IN DOUBT ASK



ISOMTERIC VIEW



FRONT VIEW

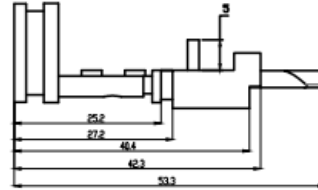
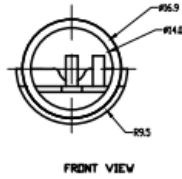
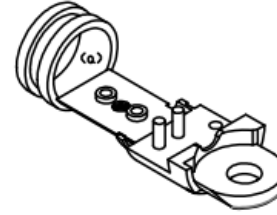
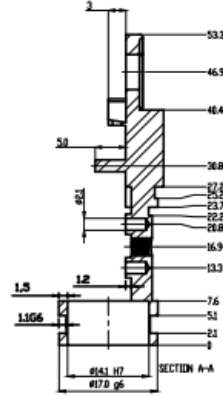
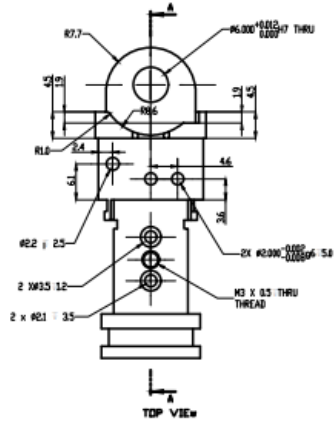
**NOTE:**

- 1) FOLLOW igs/STEP FILE FOR ANY MISSING DIMENSION.
- 2)  $\pm .02$  TOLERANCE ACCEPTED.
- 3) PART WILL BE ACCEPTED AFTER INSPECTION.

\*CRITICAL FOR INSTALLATION PURPOSE\*

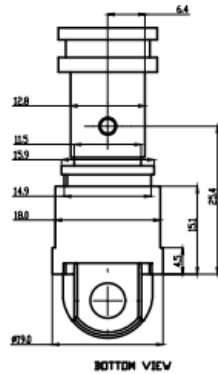
MECHANICAL PART-3 (Metalon/Nylon 66)

IF IN DOUBT ASK



ISOMETRIC VIEW

SIDE VIEW

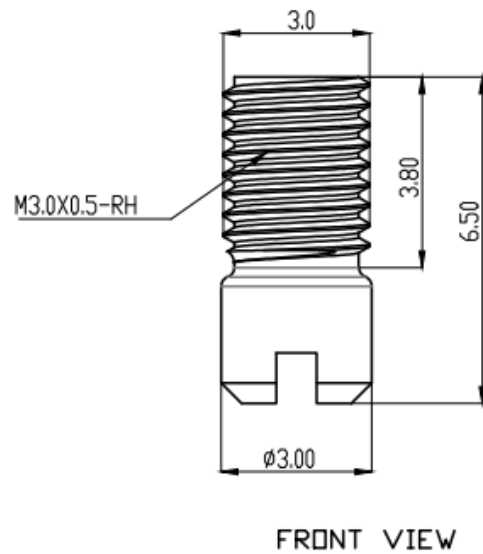
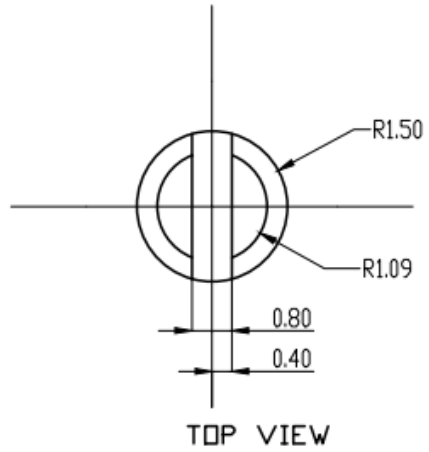


NOTE:

- 1) FOLLOW igs/STEP FILE FOR ANY MISSING DIMENSION.
- 2) HOLES SHOULD BE CHROMTISED ONLY.
- 3) (a) DENOTES INNER SURFACE
- 4) (b) DENOTES OUTER SURFACE
- 5) ANODISATION AND CHROMETISATION ONLY APPLICABLE WHEN AL ALLOY IS USED.
- 6) ± .02 TOLERANCE ACCEPTED.
- 7) PART WILL BE ACCEPTED AFTER INSPECTION.

\*(CRITICAL FOR INSTALLATION PURPOSE)

MECHANICAL PART-4 (st. steel 304)



ISOMETRIC VIEW

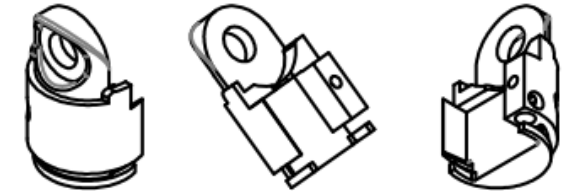
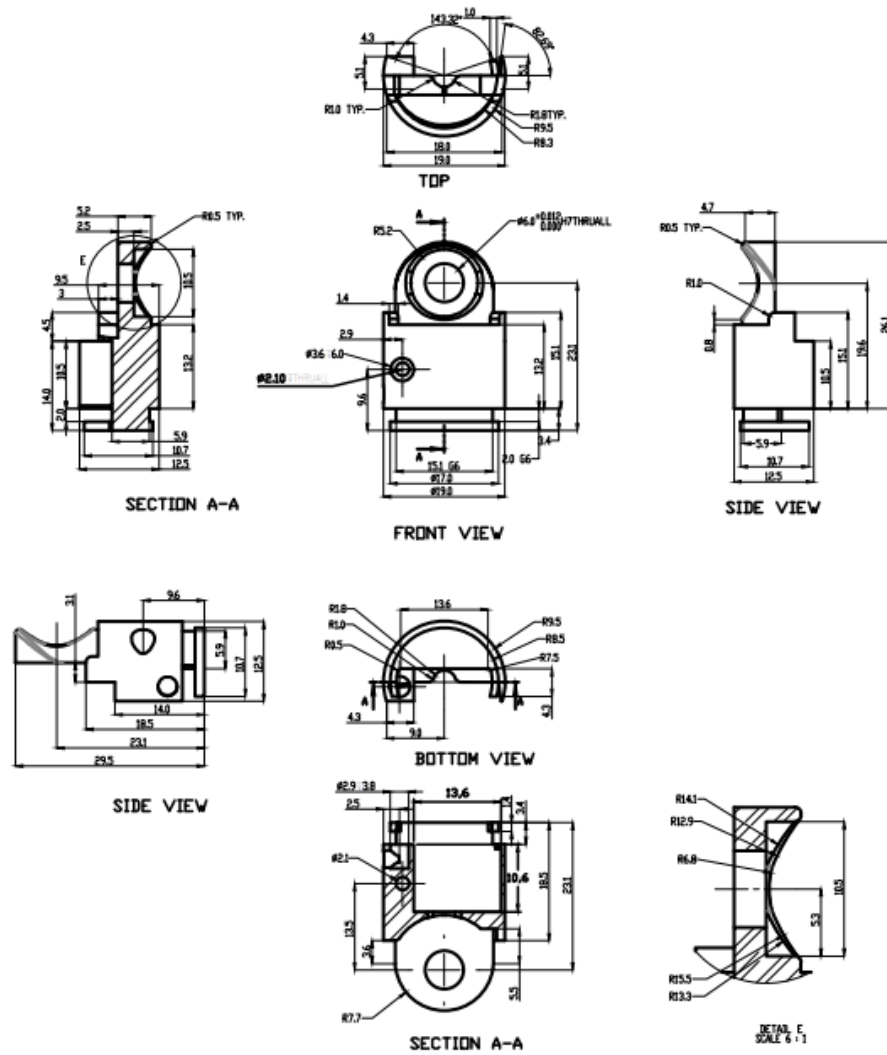
NOTE:

- 1) FOLLOW igs/STEP FILE FOR ANY MISSING DIMENSION.
- 2) OUTER SURFACE SHOULD BE DULL BLACK.
- 3)  $\pm .02$  TOLERANCE ACCEPTED.
- 4) PART WILL BE ACCEPTED AFTER INSPECTION.

\*(CRITICAL FOR INSTALLATION PURPOSE)

MECHANICAL PART-5 (Metalon/Nylon 66)

11 IN 0001 FIG. 1



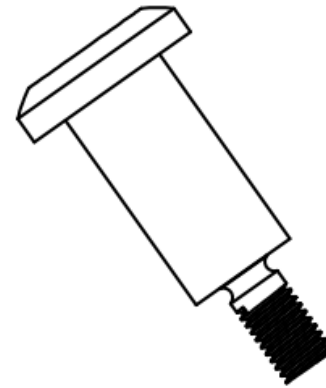
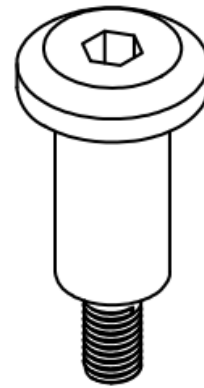
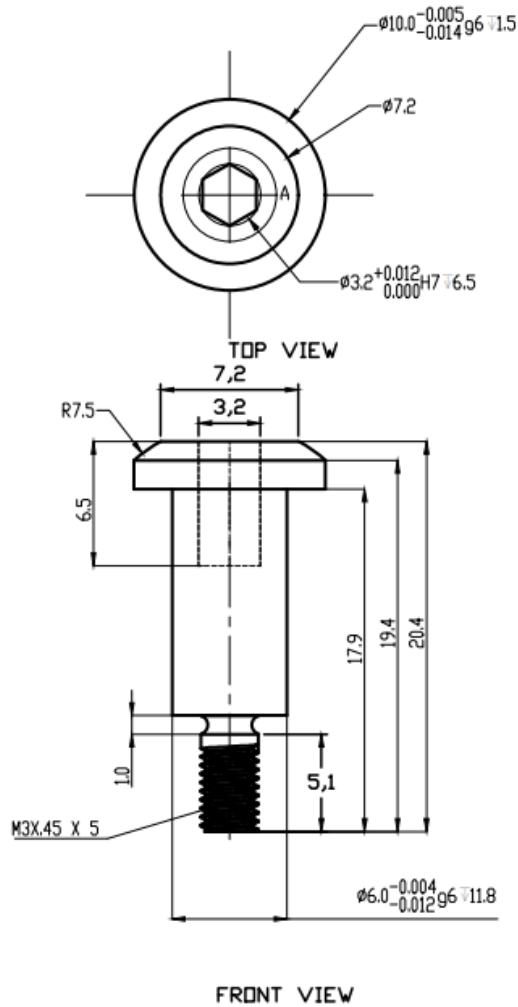
ISOMETRIC VIEW

- NOTE:**
- 1) FOLLOW IGS/STEP FILE FOR ANY MISSING DIMENSION.
  - 2) HOLES SHOULD BE CHROMETISED ONLY.
  - 3) SURFACE DULL BLACK ANODISATION WHEN USING AL ALLOY.
  - 4) ± .02 TOLERANCE ACCEPTED.
  - 5) PART WILL BE ACCEPTED AFTER INSPECTION.

\*(CRITICAL FOR INSTALLATION PURPOSE)

MECHANICAL PART-6 (st steel-304)

11 IN DDDT FOR



ISOMETRIC VIEW

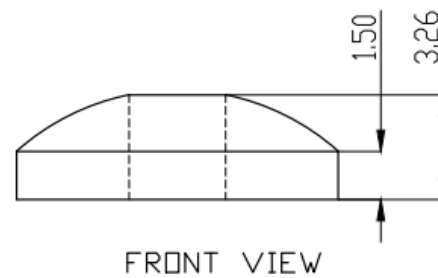
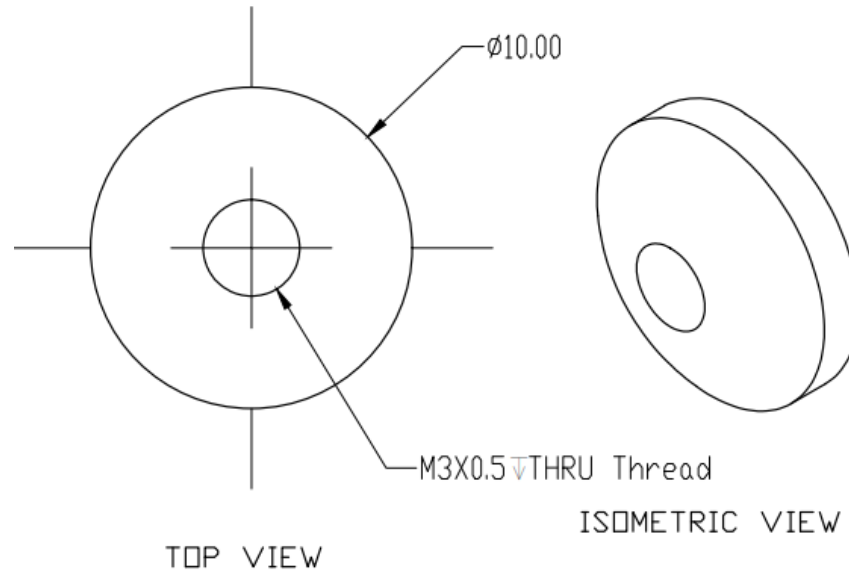
NOTE:

- 1) FOLLOW IGS/STEP FILE FOR ANY MISSING DIMENSION.
- 2) DULL BLACK SURFACE
- 3)  $\pm .02$  TOLERANCE ACCEPTED.
- 4) PART WILL BE ACCEPTED AFTER INSPECTION.

\*(CRITICAL FOR INSTALLATION PURPOSE)

MECHANICAL PART-7 (st steel 304)

IF IN DOUBT FOR



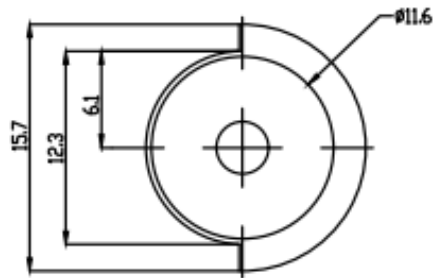
NOTE:

- 1) FOLLOW igs/STEP FILE FOR ANY MISSING DIMENSION.
- 2) DULL BLACK SURFACE.
- 3) THREAD AREA REMAINS CHROMETISED
- 4)  $\pm .02$  TOLERANCE ACCEPTED.
- 5) PART WILL BE ACCEPTED AFTER INSPECTION.

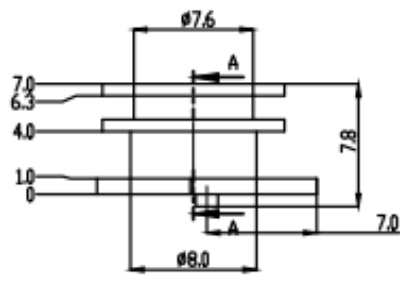
\*(CRITICAL FOR INSTALLATION PURPOSE)



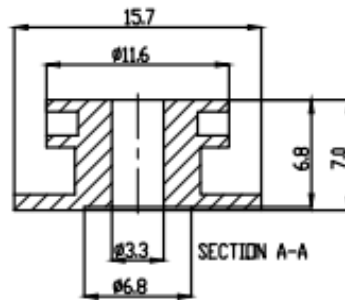
MECHANICAL PART-8 (st steel 304)



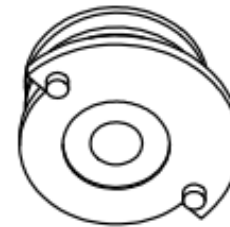
TOP VIEW



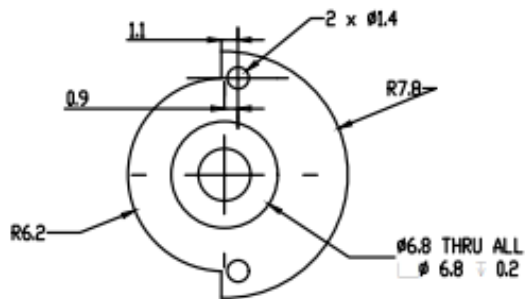
FRONT VIEW



SECTION A-A



ISOMETRIC VIEW



BOTTOM VIEW

NOTE:

- 1) FOLLOW igs/STEP FILE FOR ANY MISSING DIMENSION.
- 2) HOLES SHOULD BE CHROMETISED ONLY.
- 3) SURFACE DULL BLACK ANODISATION WHEN AL ALLOY IS USED.
- 4)  $\pm .02$  TOLERANCE ACCEPTED.
- 5) PART WILL BE ACCEPTED AFTER INSPECTION.

\*(CRITICAL FOR INSTALLATION PURPOSE)



MECHANICAL PART-10 (st steel 304)

