

FABRICATION OF COMPONENTS.

" FABRICATION OF COMPONENTS FOR ONGOING PROJECT ACTIVITY"

1. THE ORDER SHOULD NOT BE PREFERABLY SPLITTED. THE COMPREHENSIVE QUOTE CONSIDERING FABRICATION/FITMENT OF ALL COMPONENTS, FOR AT CSIO WILL BE CONSIDERED.

THE QUOTES SHOULD BE GIVEN WITH MATERIAL (AL ALOY AS PER DWG OR DISCUSSIONS).

2. THE REQUIRED QUANTITY IS 1 NOS EACH AND COMPONENTS SHOULD BE SEALED /PACKED AS PER THE ORIGINAL FACTORY PACKING. IF FOUND DAMAGED, WILL BE RETURNED.

3. THE PRICE SHOULD BE INCLUDING EX-CSIO DELIVERY.

4. THE VALID COC/INSPECTION REPORT SHOULD BE SHARED.

5. PAYMENT AND OTHER THINGS AS PER CSIO NORMS

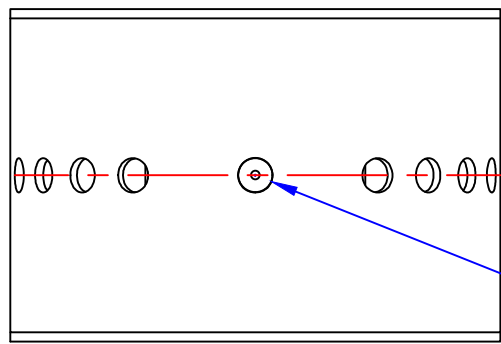
6. PL MAIL AT head.pme@csio.res.in, harry.garg@csio.res.in

7. QUOTE TIME 4 DAYS FROM DATE OF TENDER.

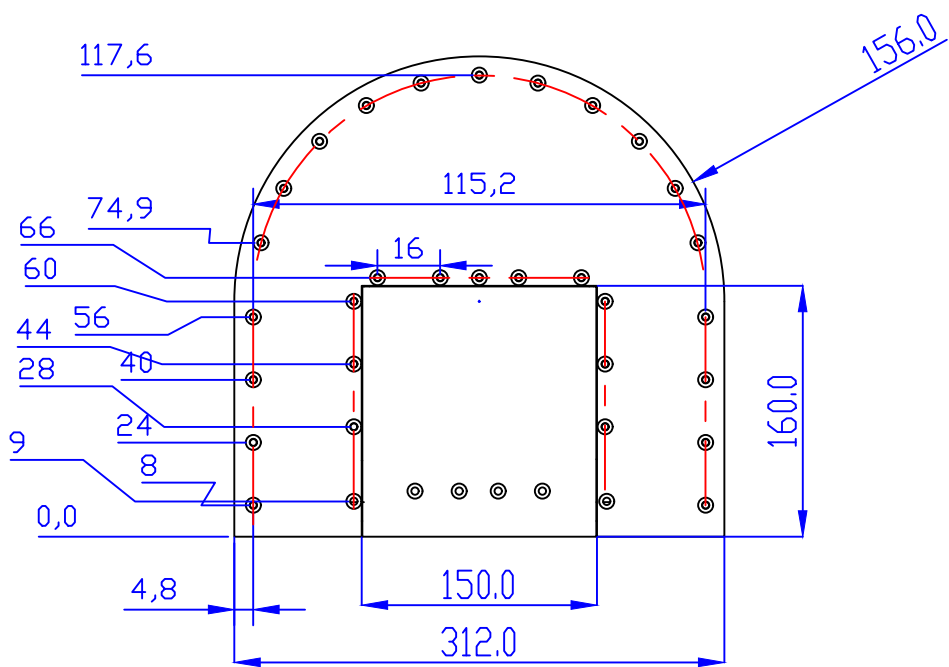
8. THE DETAILS OF USER WILL NOT BE SHARED.

9. THE UNIT SHOULD BE PAINTED (PREFERABLY WHITE FROM INSIDE) AND DULL BLACK POWDER COATED OUTSIDE SURFACE.

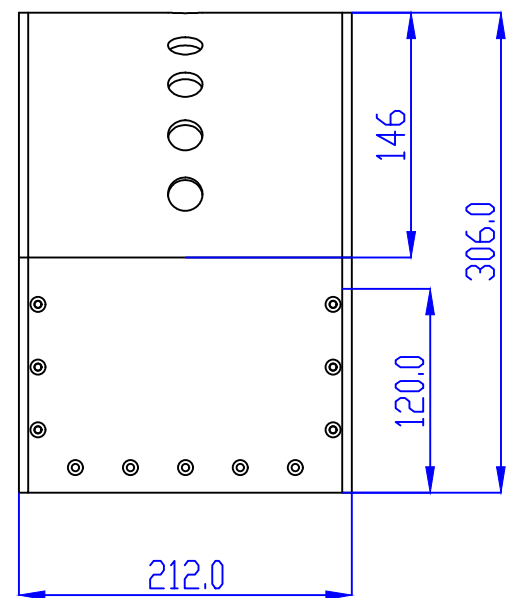
10. FABRICATOR TO SHARE THE DELIVERY TIMELINES AFTER PO AND PAYMENT TERMS.. . FABRICATOR OF COMPONENTS/ PO IS PURELY THE PREROGATIVE OF CSIO.



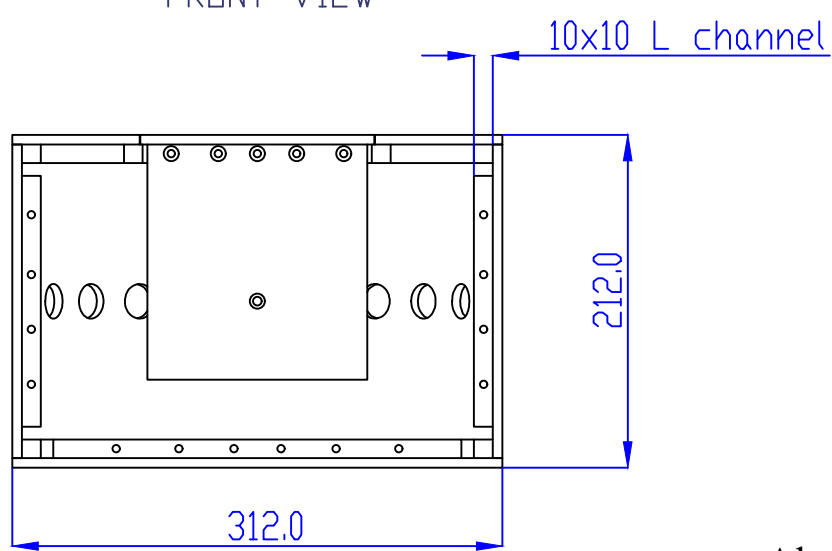
TOP VIEW



FRONT VIEW

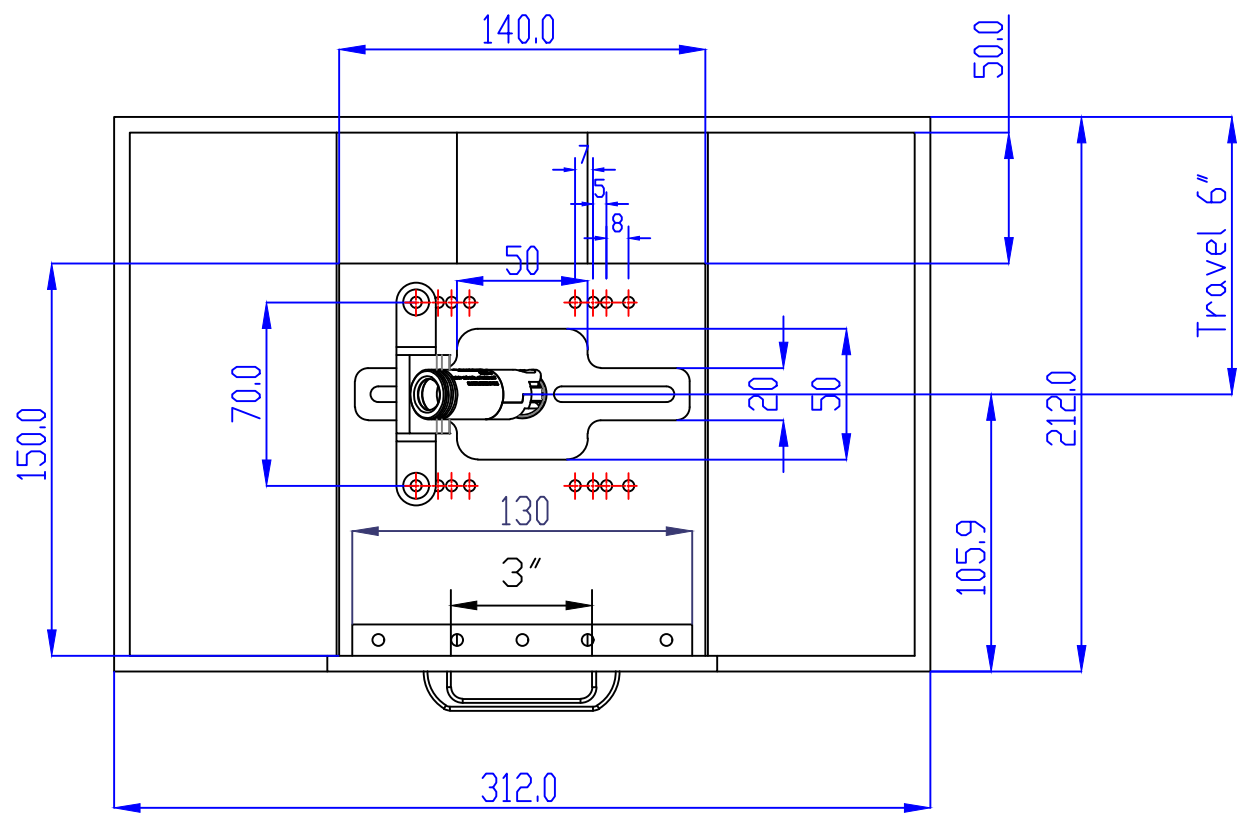


SIDE VIEW

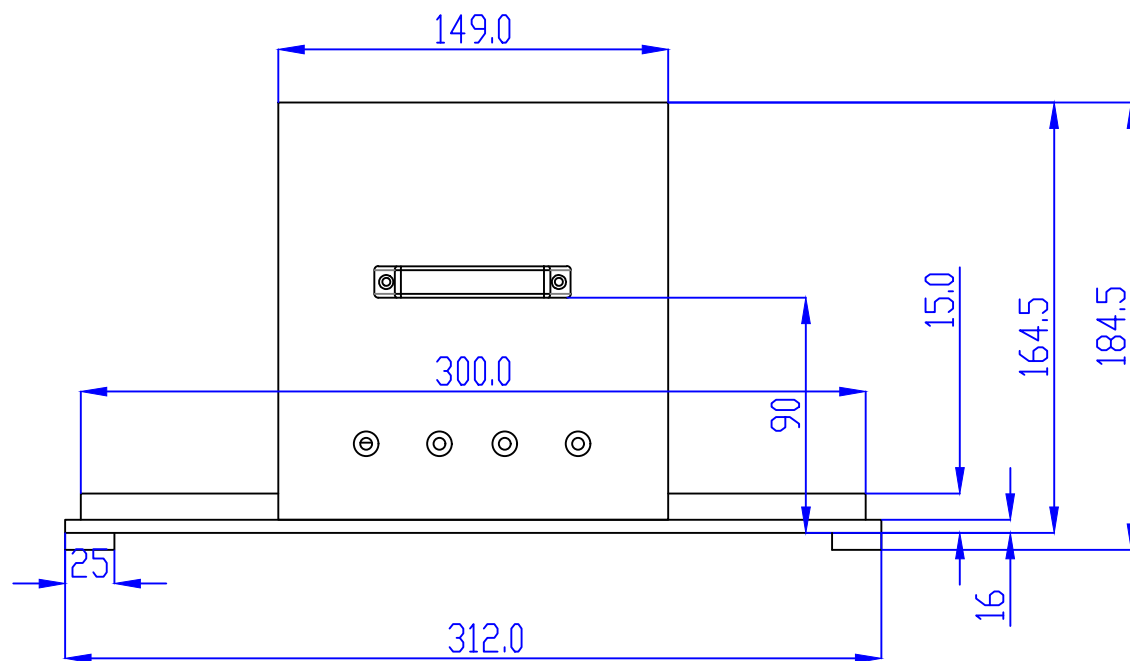


BOTTOM VIEW

Aluminium sheet semi circular envelop
 with size 212mmX312mmx306mm R156
 wall thickness surrounding 6mm-top side 3mm
 No. OP 33M1.02



TOP VIEW



FRONT VIEW

Mounting Tray with Slider and workholder
 Holding plate with handle size 3inch
 overall Size 16mmX212mmX312mm
 Travel approximately 6 inch No. OP 33M1.11