

FABRICATION OF COMPONENTS.

REF: MDF/ FAB/LL/27/11/01

" FABRICATION OF COMPONENTS Ver-02"

1. THE ORDER SHOULD NOT BE PREFERABLY SPLITTED. THE COMPREHENSIVE QUOTE CONSIDERING FABRICATION/FITMENT OF ALL COMPONENTS, FOR CSIO WILL BE CONSIDERED.

THE QUOTES SHOULD BE GIVEN CONSIDERING MATERIAL AND PL CHECK THE DWGS AS THIS IS VERSION 02. COMPONENTS REQUIRED WITHIN 10 DAYS FROM PO. IF YOU ARE QUOTING, IT IS ASSUMED, YOU AGREE TO TERMS.

2. THE REQUIRED QUANTITY IS 5 NOS EACH AND COMPONENTS SHOULD BE SEALED /PACKED AS PER THE ORIGINAL FACTORY PACKING. IF FOUND DAMAGED, WILL BE RETURNED.

3. THE PRICE SHOULD BE INCLUDING EX-CSIO DELIVERY.

4. THE VALID COC/INSPECTION REPORT SHOULD BE SHARED.

5. PAYMENT AND OTHER THINGS AS PER CSIO NORMS

6. PL MAIL harry.garg@csio.res.in

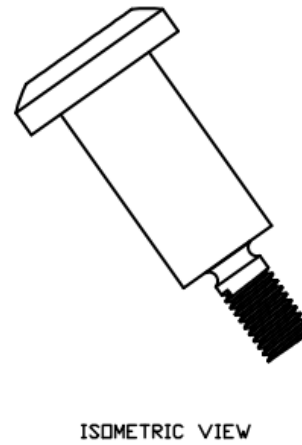
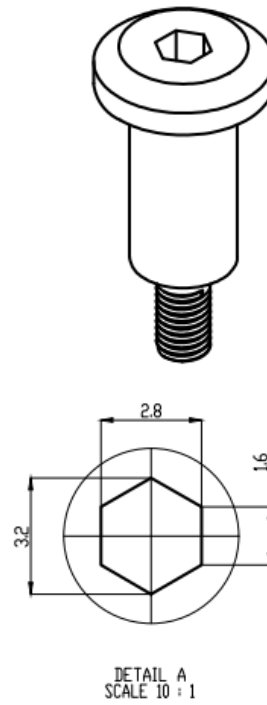
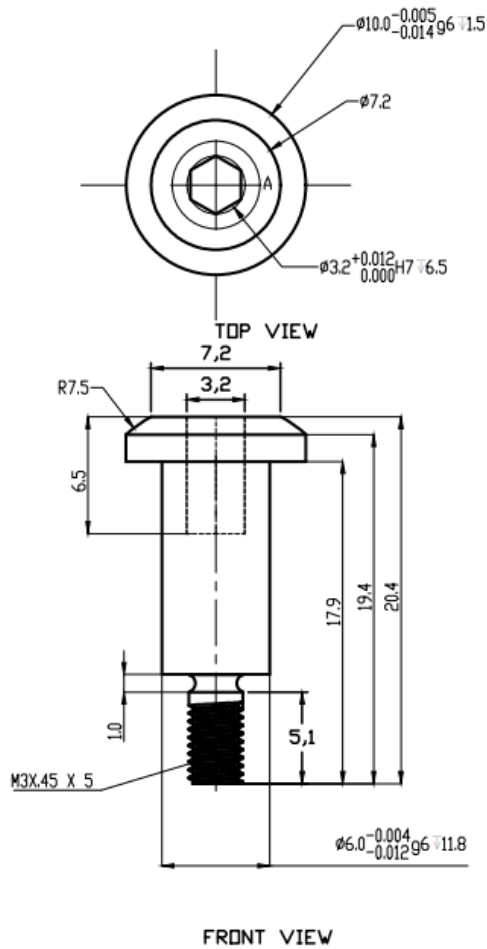
7. QUOTE TIME AS MENTIONED IN TENDER.

8. THE DETAILS OF USER WILL NOT BE SHARED.

9. FABRICATOR TO SHARE THE DELIVERY TIMELINES AFTER PO AND PAYMENT TERMS.. . FABRICATOR OF COMPONENTS/ PO IS PURELY THE PREROGATIVE OF CSIO.

COMPONENT-1, V-02 (st steel-304)

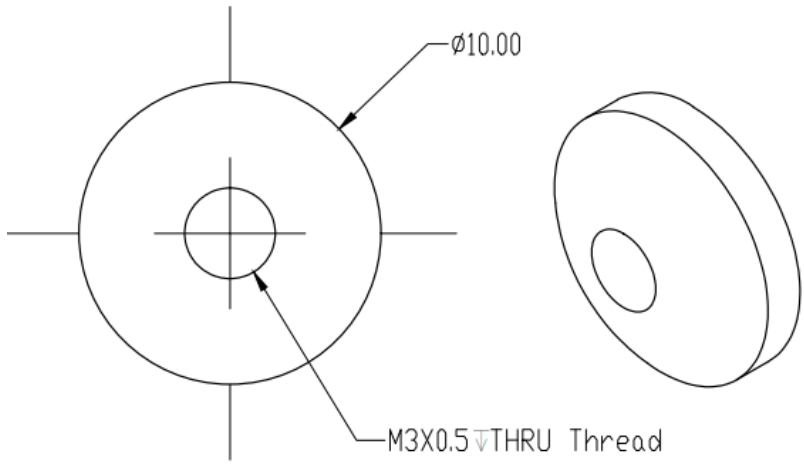
11 IN 0001 70X



- NOTE:
- 1) FOLLOW igs/STEP FILE FOR ANY MISSING DIMENSION.
 - 2) DULL BLACK SURFACE
 - 3) $\pm .02$ TOLERANCE ACCEPTED.
 - 4) PART WILL BE ACCEPTED AFTER INSPECTION.

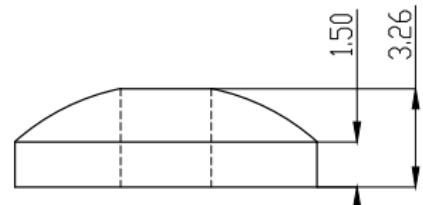
CRITICAL FOR INSTALLATION PURPOSE

IF IN DOUBT ASK



TOP VIEW

ISOMETRIC VIEW



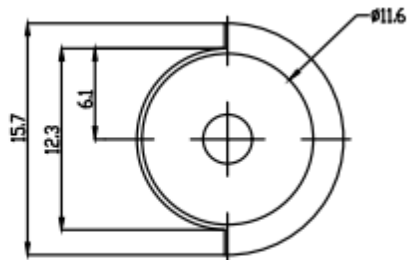
FRONT VIEW

- NOTE:
- 1) FOLLOW igs/STEP FILE FOR ANY MISSING DIMENSION.
 - 2) DULL BLACK SURFACE.
 - 3) THREAD AREA REMAINS CHROMETISED
 - 4) $\pm .02$ TOLERANCE ACCEPTED.
 - 5) PART WILL BE ACCEPTED AFTER INSPECTION.

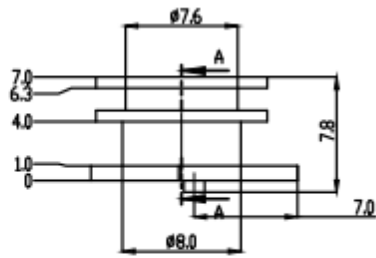
*(CRITICAL FOR INSTALLATION PURPOSE)

COMPONENT-2, V-02 (st steel 304)

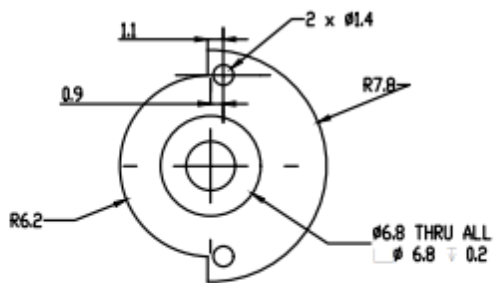
COMPONENT-3, V-02 (st steel 304)



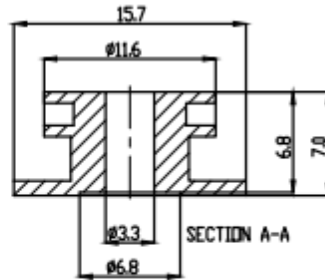
TOP VIEW



FRONT VIEW



BOTTOM VIEW



SECTION A-A



ISOMETRIC VIEW

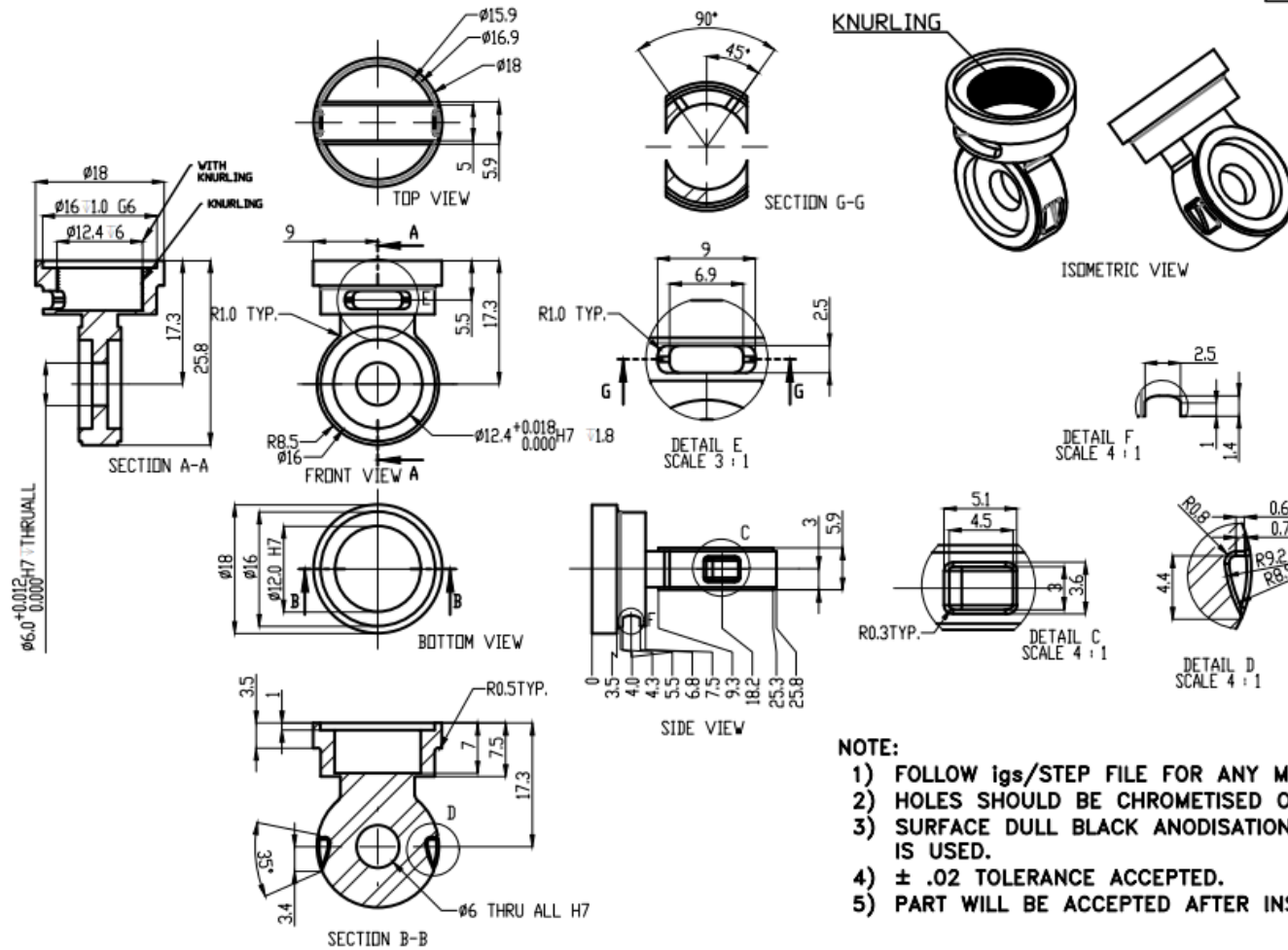
NOTE:

- 1) FOLLOW igs/STEP FILE FOR ANY MISSING DIMENSION.
- 2) HOLES SHOULD BE CHROMETISED ONLY.
- 3) SURFACE DULL BLACK ANODISATION WHEN AL ALLOY IS USED.
- 4) $\pm .02$ TOLERANCE ACCEPTED.
- 5) PART WILL BE ACCEPTED AFTER INSPECTION.

*(CRITICAL FOR INSTALLATION PURPOSE)

COMPONENT-4, V-02 ((Material Aluminium: 6061T6)

IF IN DOUBT ASK



*(CRITICAL FOR INSTALLATION PURPOSE)

COMPONENT-5, V-02 -4 (st steel 304)

