

FABRICATION OF COMPONENTS.

REF: MDF/ FAB/LL/16/11/01

" FABRICATION OF COMPONENTS"

1. THE ORDER SHOULD NOT BE PREFERABLY SPLITTED. THE COMPREHENSIVE QUOTE CONSIDERING FABRICATION/FITMENT OF ALL COMPONENTS, FOR CSIO WILL BE CONSIDERED.

THE QUOTES SHOULD BE GIVEN CONSIDERING MATERIAL.

2. THE REQUIRED QUANTITY IS 5 NOS EACH AND COMPONENTS SHOULD BE SEALED /PACKED AS PER THE ORIGINAL FACTORY PACKING. IF FOUND DAMAGED, WILL BE RETURNED.

3. THE PRICE SHOULD BE INCLUDING EX-CSIO DELIVERY.

4. THE VALID COC/INSPECTION REPORT SHOULD BE SHARED.

5. PAYMENT AND OTHER THINGS AS PER CSIO NORMS

6. PL MAIL AT head.pmc@csio.res.in, harry.garg@csio.res.in

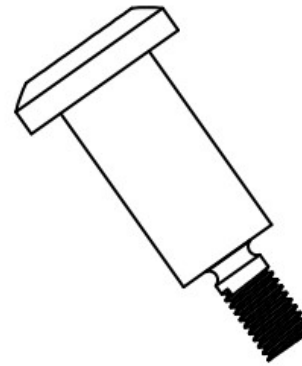
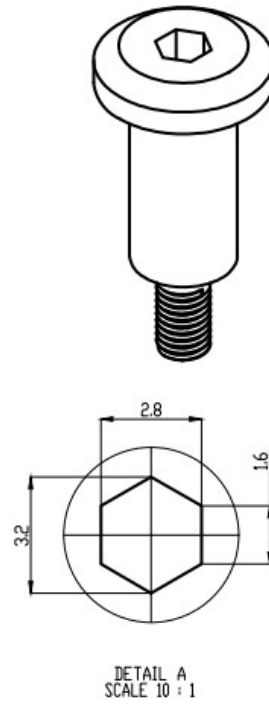
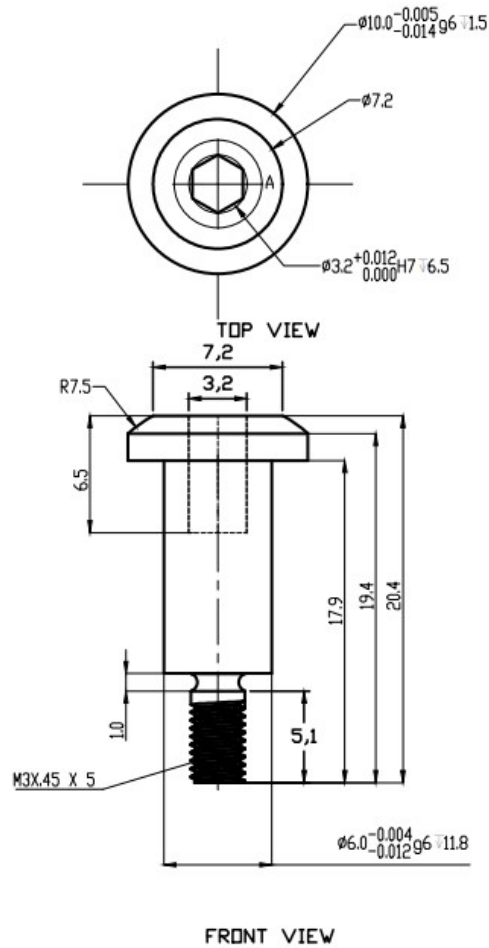
7. QUOTE TIME 7 DAYS FROM DATE OF TENDER.

8. THE DETAILS OF USER WILL NOT BE SHARED.

9. FABRICATOR TO SHARE THE DELIVERY TIMELINES AFTER PO AND PAYMENT TERMS.. . FABRICATOR OF COMPONENTS/ PO IS PURELY THE PREROGATIVE OF CSIO.

MECHANICAL PART-1 (st steel-304)

11 IN 0001 70X



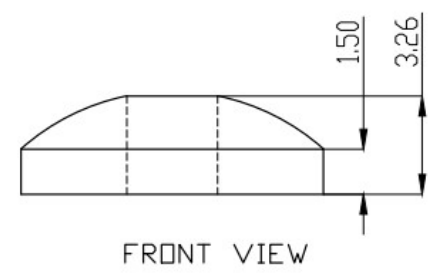
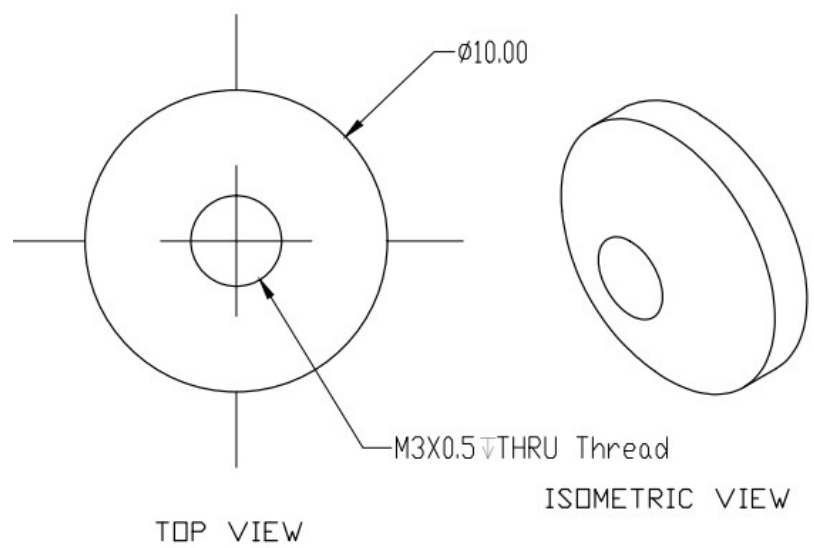
ISOMETRIC VIEW

NOTE:

- 1) FOLLOW igs/STEP FILE FOR ANY MISSING DIMENSION.
- 2) DULL BLACK SURFACE
- 3) $\pm .02$ TOLERANCE ACCEPTED.
- 4) PART WILL BE ACCEPTED AFTER INSPECTION.

*CRITICAL FOR INSTALLATION PURPOSE)

IF IN DOUBT ASK

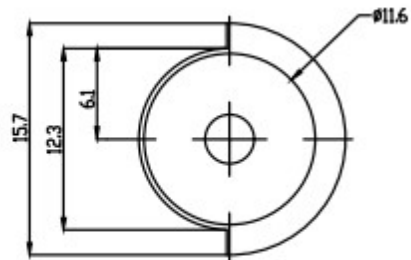


- NOTE:**
- 1) FOLLOW igs/STEP FILE FOR ANY MISSING DIMENSION.
 - 2) DULL BLACK SURFACE.
 - 3) THREAD AREA REMAINS CHROMETISED
 - 4) ± .02 TOLERANCE ACCEPTED.
 - 5) PART WILL BE ACCEPTED AFTER INSPECTION.

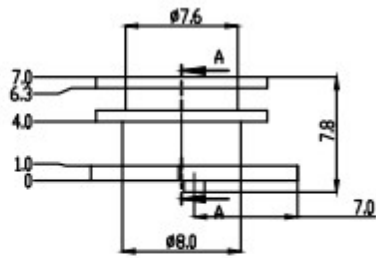
*(CRITICAL FOR INSTALLATION PURPOSE)

MECHANICAL PART-2 (st steel 304)

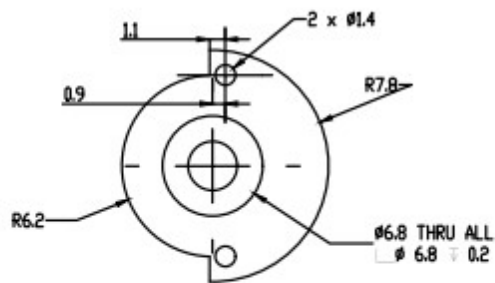
MECHANICAL PART-2-a (st steel 304)



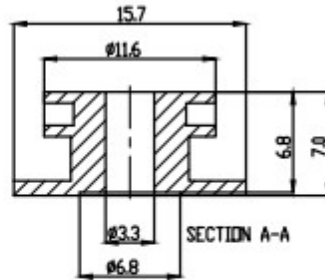
TOP VIEW



FRONT VIEW



BOTTOM VIEW



SECTION A-A



ISOMETRIC VIEW

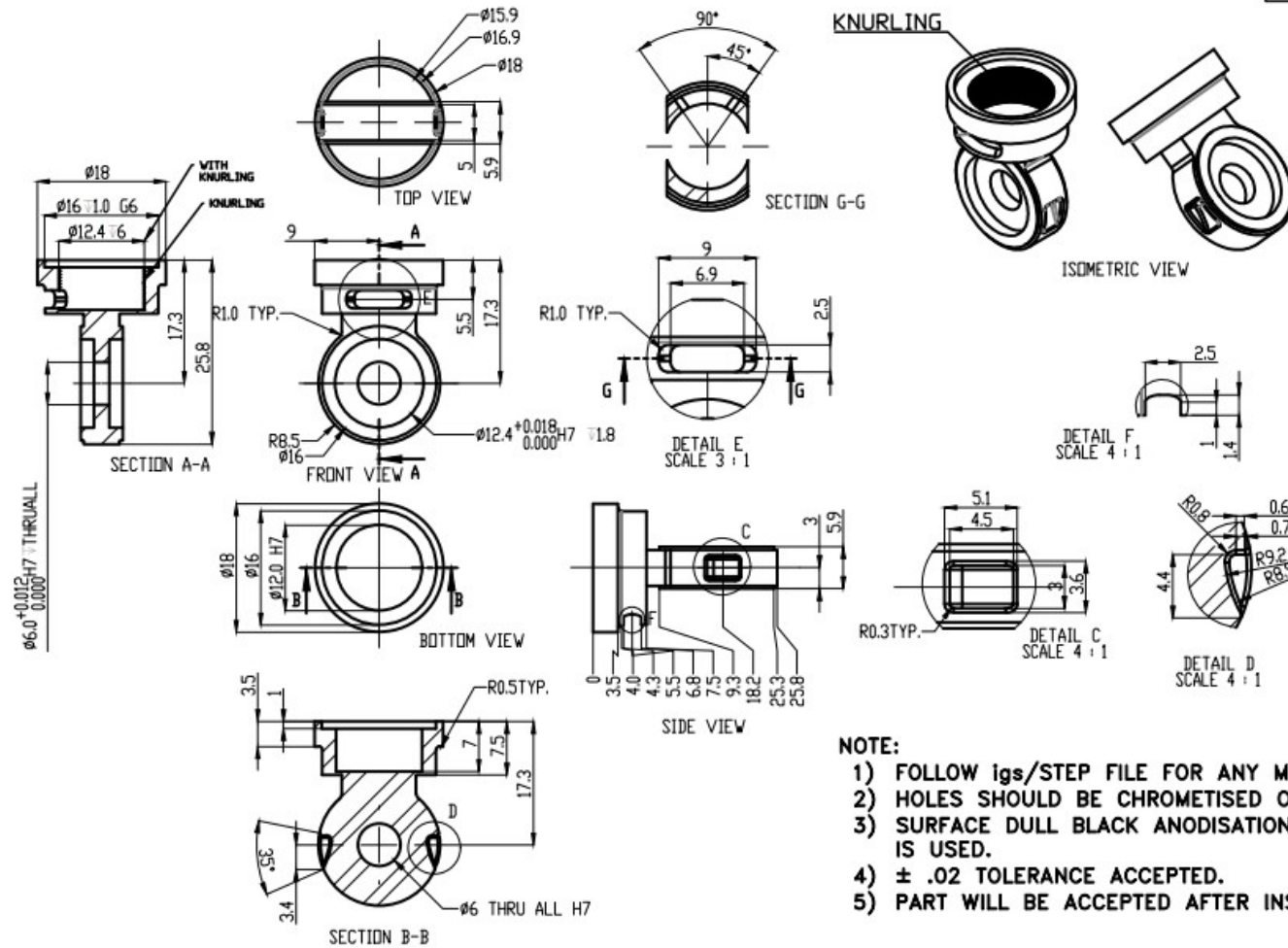
NOTE:

- 1) FOLLOW igs/STEP FILE FOR ANY MISSING DIMENSION.
- 2) HOLES SHOULD BE CHROMETISED ONLY.
- 3) SURFACE DULL BLACK ANODISATION WHEN AL ALLOY IS USED.
- 4) $\pm .02$ TOLERANCE ACCEPTED.
- 5) PART WILL BE ACCEPTED AFTER INSPECTION.

*(CRITICAL FOR INSTALLATION PURPOSE)

MECHANICAL PART-3 ((Material Aluminium: 6061T6))

IF IN DOUBT ASK



- NOTE:**
- 1) FOLLOW IGS/STEP FILE FOR ANY MISSING DIMENSION.
 - 2) HOLES SHOULD BE CHROMETISED ONLY.
 - 3) SURFACE DULL BLACK ANODISATION WHEN AL ALLOY IS USED.
 - 4) ± .02 TOLERANCE ACCEPTED.
 - 5) PART WILL BE ACCEPTED AFTER INSPECTION.

※(CRITICAL FOR INSTALLATION PURPOSE)

MECHANICAL PART-4 (st steel 304)

