

Lattice Acetabular Cup

Introduction

The most common cause of revision surgery after total hip arthroplasty (THA) is aseptic loosening. With improved life expectancies, the number of revision THA surgeries is also increasing. To obtain long-term stable acetabular component fixation, biological fixation is required, and osseointegration into the acetabular cup lattice structure region, are important. The Lattice Acetabular cup is available in various sizes to fulfill the individual patient requirement.

Features

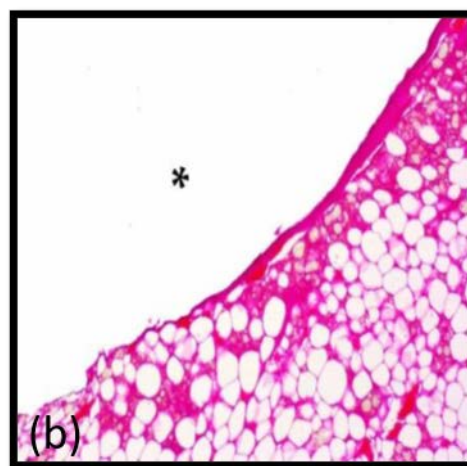
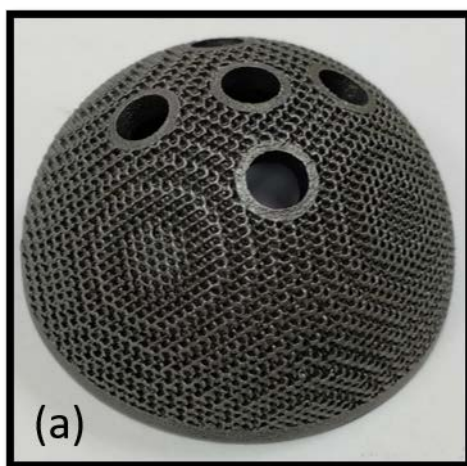
- 3D printed with pore structure optimized for bone ingrowth
- Highly porous surface
- Young's Modulus of Lattice surface matching with cortical bone
- Reduced Stress Shielding
- Printed in Biocompatible Ti6Al4V ELI
- Integrated solid and lattice interface

Applications

For Hip Revision Surgeries

Status

Present TRL Level – 5



(a) Lattice Acetabular Cup (b) asterisk showing bony growth at the implant site